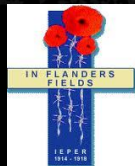


In Flanders Earth

van luchtfoto tot digitale ontsluiting

4E.367.
28 I.35ab.
12.7.17-6.

Birger Stichelbaut - Ghent University



Inleiding

2014-2018: toenemende interesse in erfgoed WO1

In Flanders Fields Museum (Ieper): In Flanders Earth applicatie

- Interactieve museumopstelling
- Gebaseerd op wetenschappelijk onderzoek UGent



Bird's eye view



Bird's eye view



Methodologie - databank

Great War aerial photography

Selectie beelden in de archieven:

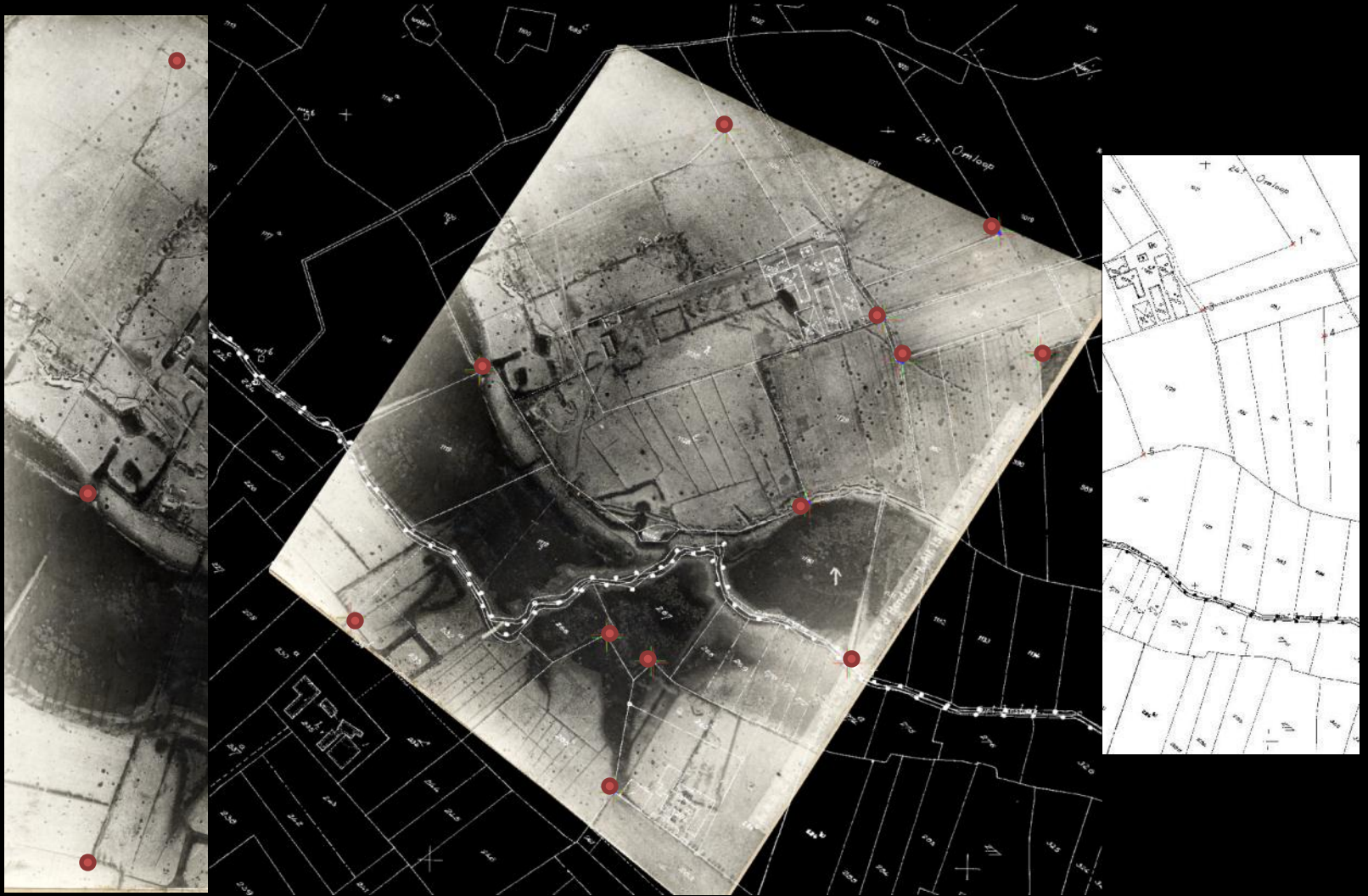
Scannen

Databank: metadata
21.000 luchtfoto's

Photo number	1250	date	18/03/1918
Community	Diksmuide		
Region	Pont-Rail; W Diksmuide		
Pilot			
Adjutant		Ledure	
Observer			
Lieutenant		Collin	
Altitude	1000		
Unit			
Nationality	Belgisch		
Focal length			
Description	Kind of AP	verticaal	
Foto van Belgische en Duitse loopgraven ter hoogte van de spoorwegbrug over de IJzer. Enkele bunkers zijn zeer goed zichtbaar. Landschap bezaaid met talrijke kraters.			
Archive	Koninklijk Legermuseum		
Box file	Diksmuide 1		
'14-'18 Reference	3021		
Located in GIS?	<input checked="" type="checkbox"/>	Georectified?	<input checked="" type="checkbox"/>



Methodologie: georectificatie



Methodologie: georectificatie



Methodologie: georectificatie



In Flanders Earth

Opstelling in museum



Interface



In Flanders Earth

Doelstellingen IFE:

- Aanbieden unieke vogelperspectief
- Confrontatie historische en moderne landschap
→ landschap is de laatste getuige!



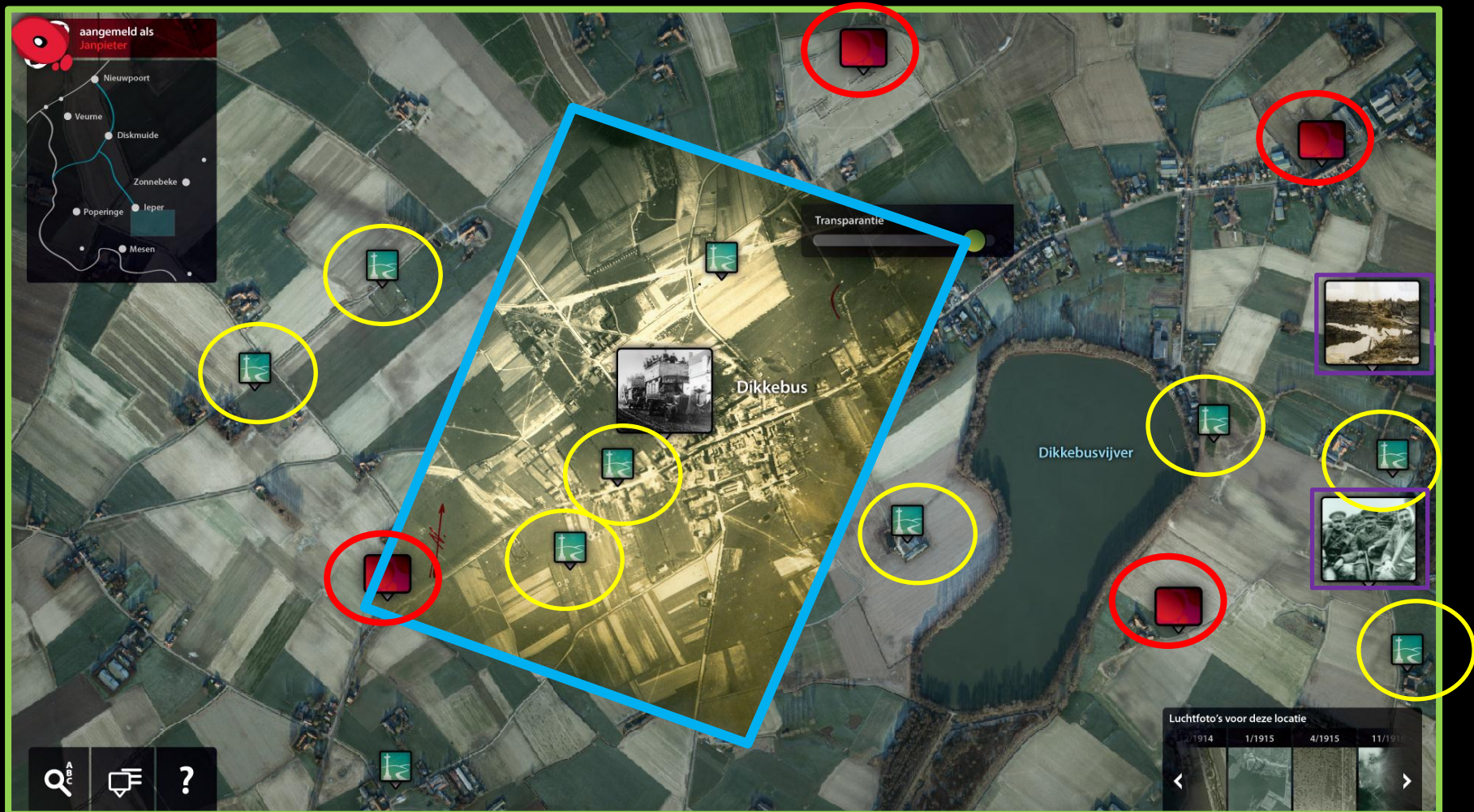
In Flanders Earth - interface

Recente orthofoto

Historische luchtfoto's

Hotspots

Sites + historische foto's



Luchtfotobedekking

jaren:

1915

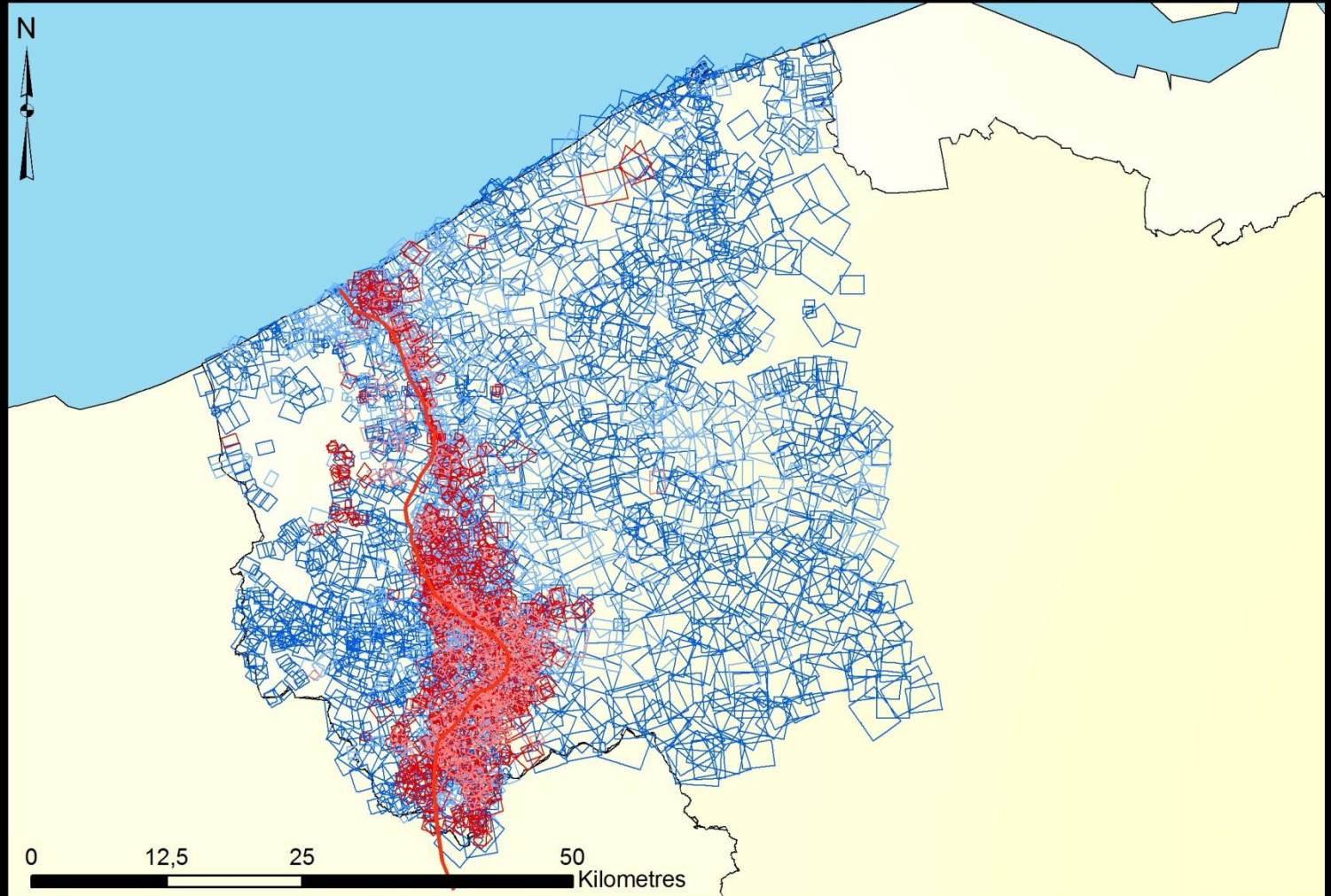
1916

1917

1918

1915-1918

(3400 APs)



IFE: doelpubliek + navigeren



IFE: dynamische link + raadplegen foto's

The screenshot displays a satellite map interface for the location Dikkebus. The map features several interactive elements:

- Top Left:** A user profile indicator showing "aangemeld als Janpieter" with a red speech bubble icon.
- Top Left Panel:** A list of locations: Nieuwpoort, Veurne, Diskmuide, Zonnebeke, Poperinge, Ieper, and Mesen, connected by a blue line.
- Center:** The map is labeled "Dikkebus" and "Dikkebusvijver". A "Transparantie" slider is positioned over the map.
- Map Markers:** Numerous green icons with a white 't' and red square icons are scattered across the map.
- Bottom Left:** A navigation bar with icons for search, home, and help.
- Bottom Right:** A red circle highlights a "Luchtfoto's voor deze locatie" gallery. It shows a sequence of four historical aerial photos with dates: 7/1914, 1/1915, 4/1915, and 11/1915. The photos show the progression of a landscape, likely related to the Dikkebusvijver area.

IFE: raadplegen foto's

The screenshot displays the IFE interface for a historical aerial photograph of Dikkebus. The main view is a semi-transparent historical image overlaid on a modern satellite map. The village name "Dikkebus" and the pond "Dikkebusvijver" are labeled. A "Transparantie" (Transparency) slider is visible, and a red arrow points to a specific location. The interface includes a top-left navigation map, a bottom-left search and help bar, and a bottom-right photo gallery.

Top Left Navigation: aangemeld als Janpieter. Locations: Nieuwpoort, Veurne, Diskmuide, Zonnebeke, Poperinge, Ieper, Mesen.

Bottom Left Controls: Search icon, Home icon, Help icon.

Bottom Right Photo Gallery: Luchtfoto's voor deze locatie. Slideshow showing dates: 7/1914, 1/1915, 4/1915, 11/1914.

IFE: transparency

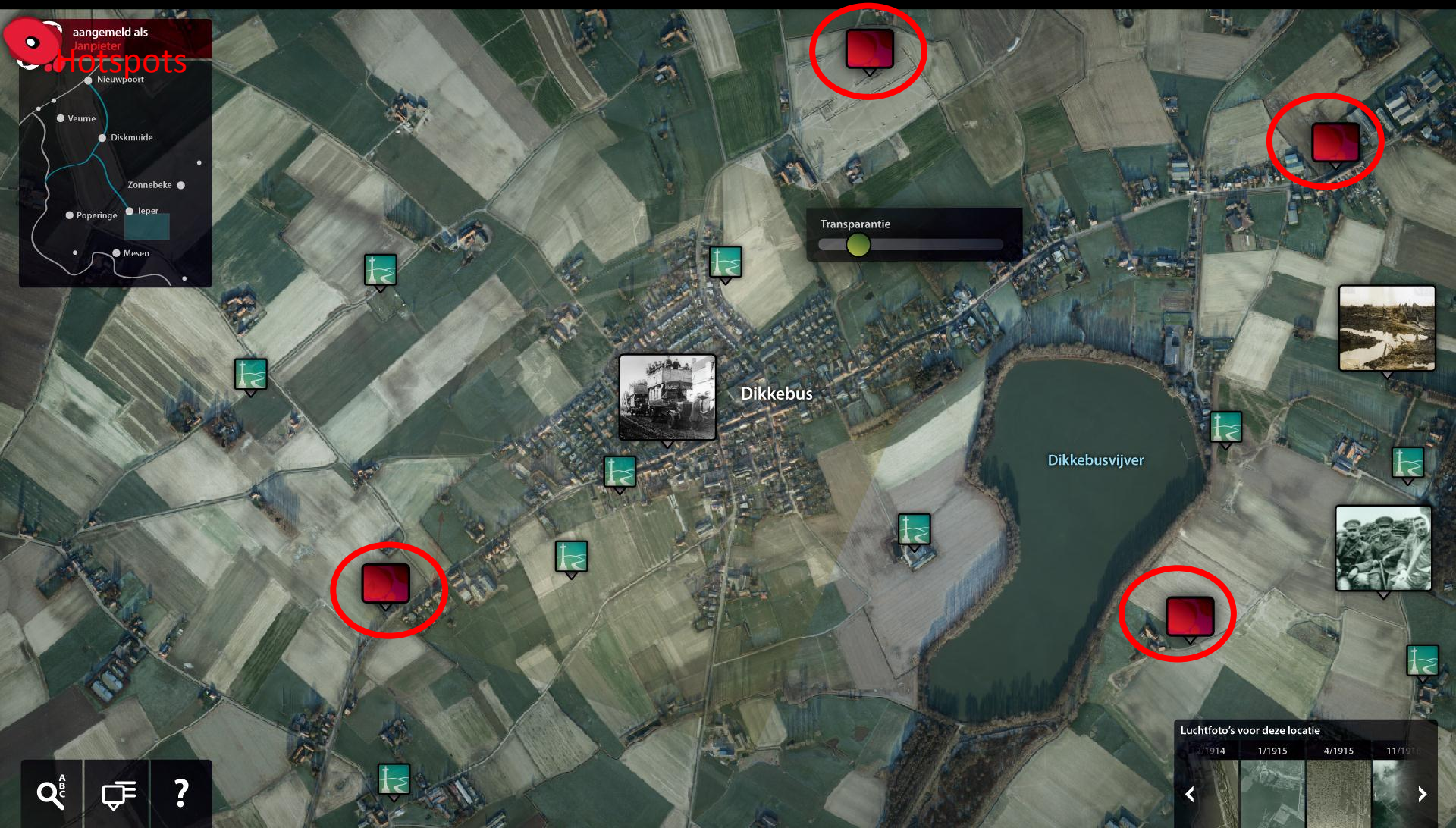


In Flanders Earth - hotspots

aangemeld als
Janpieter

Hotspots

A small inset map showing a route through several locations in Flanders: Nieuwpoort, Veurne, Diskmuide, Zonnebeke, Poperinge, Ieper, and Mesen. A red dot on the map indicates the current location.



A set of three navigation icons: a magnifying glass with a double arrow, a house icon, and a question mark.

Luchtfoto's voor deze locatie

1914	1/1915	4/1915	11/1915
------	--------	--------	---------

A horizontal gallery of four historical aerial photographs from 1914, 1/1915, 4/1915, and 11/1915. The 4/1915 photo is highlighted. Navigation arrows are present on the left and right sides of the gallery.

Hotspots



Essex Farm begraafplaats en medische hulppost

Hotspot sluiten



19/05/1916

Bridge No. 4 over het kanaal Uzer-Ieper, aan de medische hulppost en begraafplaats Essex Farm.

1/3

Transparantie

Hotspots: content

- Patstelling in de loopgraven



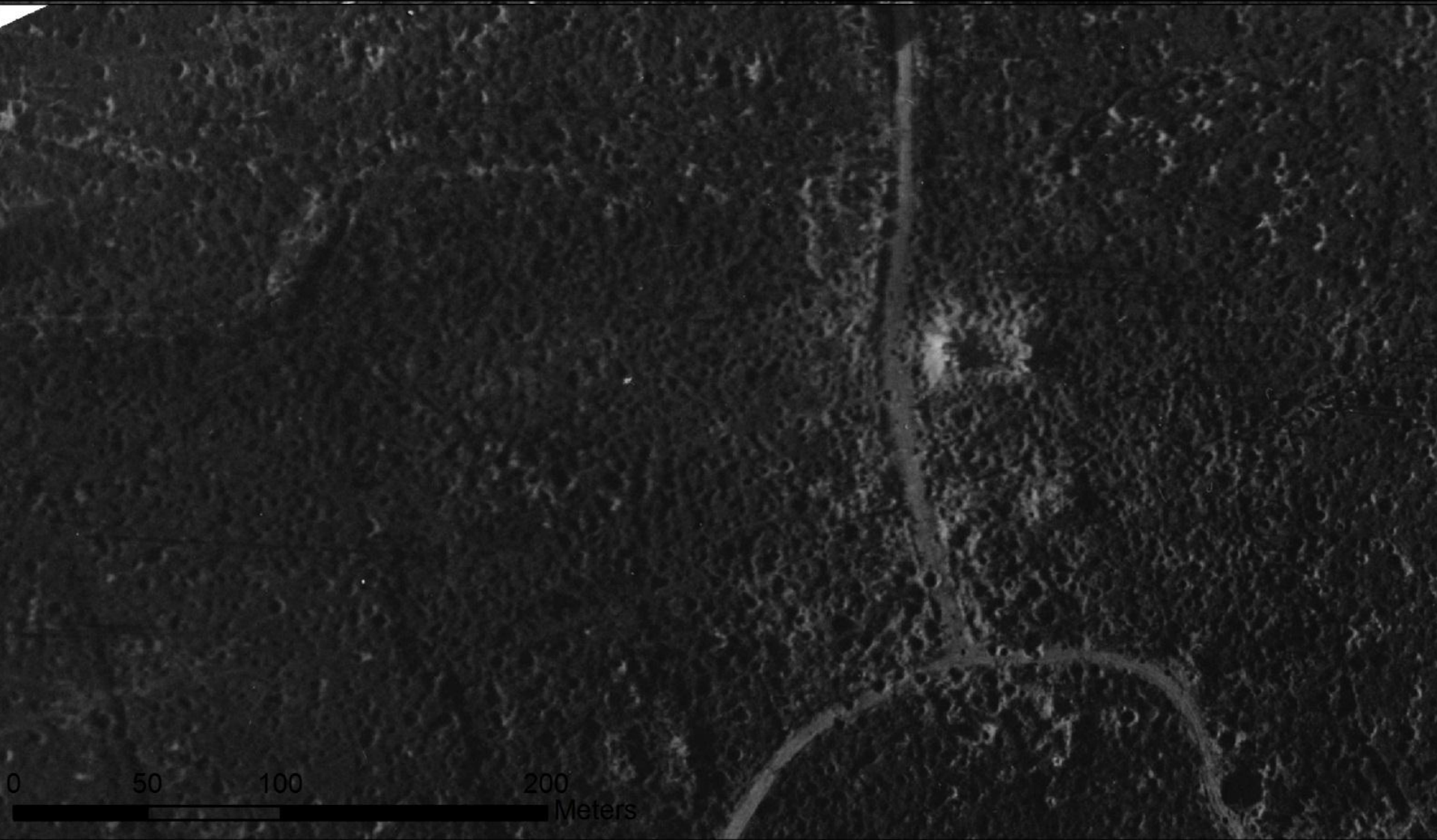
Hotspots: content

Leven achter het front



Hotspots: content

Totale vernieling



In Flanders **Earth** – conclusie

- Innovatieve museum applicatie
- IFE heeft ambitie om aan te zetten tot reflectie over schaal en intensiteit van deze oorlog en het erfgoed
- IFE: landschap in museum + uitnodiging tot bezoek op terrein





AUGUST 1914 saw the outbreak of the First World War in Europe. What was initially expected to be a short, fast-moving conflict soon became bogged down for years in the trenches of the Western Front.

The new and perilous technique of aerial photography swiftly established itself as an indispensable tool of military intelligence. Such images supplied invaluable information about the enemy's positions and intentions. The same photographs also offer later generations a unique insight into the war, highlighting the development of trenches, artillery positions, bunkers, railway lines, airfields and medical evacuation routes. They provide a detailed record of how the hostilities progressed, kilometre by kilometre, and reveal the appalling damage inflicted on the landscape around the front. Only now, however, have these unique documents been studied for the first time.

In collaboration with Mercatorfonds, the In Flanders Fields Museum, Ypres, the Imperial War Museum, London and the Royal Museum of the Armed Forces and of Military History, Brussels, have pooled their expertise to present 129 case studies in this unique and pioneering book. Birger Stichelbaut and Piet Chie lens use aerial photographs, maps and historical documents, as well as photographs taken from the ground, to present with unprecedented accuracy the physical extent of the First World War and its dramatic impact on the landscape of Flanders Fields. Informative transparent overlays help us interpret the aerial photographs: where were the front lines; how were anti-aircraft batteries concealed; and how did the fighting alter the landscape?

This illuminating volume makes a new and important contribution to the historiography of the First World War.

BIRGER STICHELBAUT is a postdoctoral researcher based in the Archaeology Department of Ghent University.

PIET CHIELENS is coordinator of the In Flanders Fields Museum in Ypres.

OVER 500 ILLUSTRATIONS, 352 PAGES • 80 TRANSPARENT OVERLAYS

Distributed by Yale University Press, New Haven and London



1914
1918



THE
GREAT WAR
SEEN
FROM
THE
AIR



STICHELBAUT
CHIELENS



MERCATORFONDS
YALE UNIVERSITY PRESS



THE GREAT WAR SEEN FROM THE AIR IN FLANDERS FIELDS, 1914-1918

MERCATORFONDS | YALE UNIVERSITY PRESS

LA GUERRE VUE DU CIEL

1914-1918 LE FRONT EN BELGIQUE

FONDS MERCIATOR

DE OORLOG VANUIT DE LUCHT

1914-1918 HET FRONT IN BELGIË

MERCATORFONDS

?

